

Report to Council



Meeting Date: 2026-04-21
Meeting Type: Council Meeting
Prepared By: Russ Nash, Director of Community & Protective Services
Presented By: Russ Nash, Director of Community & Protective Services
Subject: Active Transportation Plan – Public Engagement Summary
Department: Recreation

REPORT PURPOSE:

The purpose of this report is to provide Council with a summary of what we heard through the public engagement process for the Active Transportation Plan that is being developed.

RECOMMENDATION:

THAT Council accept the Active Transportation Plan public engagement summary report for information, as presented.

BACKGROUND:

With grant funding received from Infrastructure Canada's Active Transportation Fund, the Town of Crossfield is developing an Active Transportation Plan to:

- Improve connectivity between neighbourhoods and key destinations within town.
- Enhance safety and accessibility.
- Identify pathway construction standards and expectations.
- Identify priority gaps in sidewalks and pathways.
- Support future infrastructure investment and grant applications.

As part of the process to develop this plan, Administration undertook public engagement activities to gather feedback on current conditions, barriers and opportunities for improvement. This included:

- A survey, available online and in paper format from March 9 to 30, 2026.
- An in-person open house held at the Community Centre on March 24, 2026 from 3:00 p.m. to 7:00 p.m.

Full results of the public engagement activities are attached to this report; however, notable highlights include:

- 287 individuals responded to the survey (both online and paper).

- 18 community members attended the open house (not including staff and members of Council who were present).
- Walking was the #1 mode of non-motorized transportation identified by respondents (78%). Non-electric bicycle was the second-most selected at 27%.
- 64% of respondents use the sidewalks and pathways 4 or more times per week in the warmer months versus 71% in the winter months, indicating strong usage throughout the year.
- The top 3 reasons for using the sidewalks and pathways were exercise/fitness (73%), accessing downtown businesses (52%), and dog walking (49%).
- 79% of respondents feel Somewhat Safe or Very Safe walking or cycling in Crossfield.
- Winter conditions was the top barrier at 60% of responses. Following that, the next 3 were incomplete pathway links (44%), missing sidewalk connections (39%), and poor lighting (24%).
- 62% of respondents feel the sidewalks, pathways and crossings are Somewhat or Very Connected, while 25% of respondents feel they are Somewhat or Very Disconnected.
- The top 3 improvements selected were additional pathway connections (63%), completing missing sidewalk connections (59%), and installing trees and landscaping along pathways (41%).
- 89% of respondents Support or Strongly Support continued investment in improving active transportation infrastructure in Crossfield.

Next Steps:

The information collected through the survey and open house will be incorporated into the Active Transportation Plan and a draft plan will be presented to Council for review and input. Once finalized, the plan will be shared with the community and will also be provided to developers to help ensure consistency in pathway development.

ANALYSIS:

Strategic Alignment

- Sustainable Community Growth
- Town Infrastructure
- Parks, Recreation & Beautification
- Social Development & Emergency Services
- Communications & Public Relations

FINANCIAL IMPLICATIONS:

Costs to complete the Active Transportation Plan are covered by grant funds received through Infrastructure Canada's Active Transportation Fund.

ATTACHMENTS:

Active Transportation Plan – “What we Heard” Report



ACTIVE TRANSPORATION PLAN

WHAT WE HEARD

MARCH 2026





Administration and Council extend their thanks to all those who participated in the survey or attended the Open House. This community input plays an important role in shaping the Town of Crossfield’s Active Transportation Plan.

TABLE OF CONTENTS

BACKGROUND	3
ENGAGEMENT SUMMARY	3
SURVEY.....	3
OPEN HOUSE.....	3
ENGAGEMENT RESULTS	6
SURVEY RESULTS.....	6
OPEN HOUSE FEEDBACK SUMMARY.....	23
OVERALL INSIGHT.....	25
KEY FINDINGS.....	25
NEXT STEPS	26
APPENDIX A: OPEN HOUSE – SUMMARY OF FEEDBACK.....	27

BACKGROUND

Active transportation refers to the movement of people powered by human activity, including walking, cycling, and the use of mobility aids. Active transportation infrastructure includes sidewalks, pathways, bike lanes, and crossings that allow residents to move safely between destinations such as schools, parks, businesses, recreation facilities, and neighbourhoods.

The Town of Crossfield is developing an Active Transportation Plan to:

- Improve connectivity between neighbourhoods and key destinations within Town
- Enhance safety and accessibility
- Identify priority gaps in sidewalks and pathways
- Support future infrastructure investment and grant applications

This Plan will support implementation of Crossfield’s Municipal Development Plan and long-term transportation planning. It also builds on the findings of the Town’s 2022 Parks and Recreation Needs Assessment, which was undertaken to better understand community needs and inform future parks and recreation decisions. Through that engagement process, expanding and enhancing walking paths was identified as the number two priority for outdoor facilities, reinforcing the importance of investing in a connected and accessible pathway network.

In March 2026, the Town of Crossfield undertook public engagement to inform the development of the Active Transportation Plan. Engagement included an online survey and an in-person open house to gather feedback on current conditions, barriers, and opportunities for improvement.

ENGAGEMENT SUMMARY

SURVEY

A Survey was conducted from March 9th, 2026 – March 30th, 2026. The survey was available online through the Town of Crossfield’s website and was prompted through the Town’s social media platforms including Facebook and Instagram.

Promotional posters and postcard size mailouts featured a QR code directing community members to the survey. Paper copies of the survey were also distributed to the residents of the Rocky View Lodge to encourage senior citizen participation in the survey.

In total, 287 individuals responded to the survey.

OPEN HOUSE

An in-person Open House was held on March 24, 2026, from 3:00 p.m. to 7:00 p.m. at the Crossfield & District Community Centre, which complemented the online survey by providing residents with an opportunity to:

- Share detailed, location-specific feedback

- Identify gaps and priorities within the existing network
- Engage directly with project information and staff



The session was structured using two (2) informational boards and three (3) interactive boards, designed to both inform participants and gather meaningful input.

Informational boards provided:

- An overview of the Active Transportation Plan and its objectives
- Examples of active transportation infrastructure (e.g., sidewalks, pathways, crossings)

WHAT IS ACTIVE TRANSPORTATION?
moving around town using **sidewalks, pathways and crosswalks.**

HOW PEOPLE MOVE	THE NETWORK	WHERE IT CONNECTS
<ul style="list-style-type: none"> Walking Cycling Mobility Aid e-Bike 	<ul style="list-style-type: none"> Sidewalks Pathways Crosswalks 	<ul style="list-style-type: none"> Schools Parks Businesses Recreation Neighbourhoods

Active transportation connects people to everyday destinations throughout the Town through walking, cycling, and other forms of active travel.

WHY AN ACTIVE TRANSPORTATION PLAN?
to make it **safer & easier** to walk, bike, & roll around town

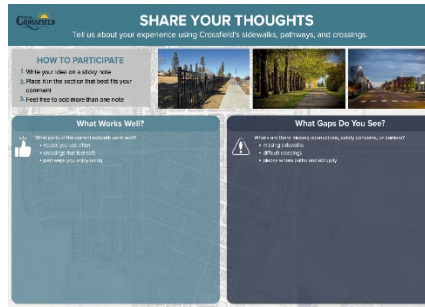
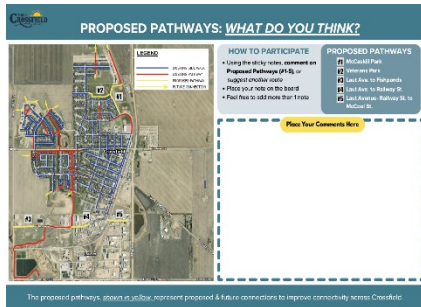
<ul style="list-style-type: none"> Improve Connectivity between neighbourhoods & key destinations 	<ul style="list-style-type: none"> Enhance Safety & Accessibility for everyone 	<ul style="list-style-type: none"> Identify Priority Gaps in sidewalks & pathways 	<ul style="list-style-type: none"> Support Future Infrastructure Investment & grant applications
--	---	--	---

In the Town's 2022 Parks & Recreation Needs Assessment, **Expanding & Enhancing Walking Paths** was ranked **#2** priority for outdoor facilities.

Supporting Crossfield's Municipal Development Plan & Long-Term Transportation Planning

Interactive boards collected feedback on:

- Resident experience (what is working well and where gaps exist)
- Suggested improvements for sidewalks, pathways, and crossings
- Preferred future pathway connections through a map-based exercise



This approach ensured participants had context before providing input, resulting in more informed and targeted feedback.

The survey was also promoted at the Open House through QR codes and paper copies available on-site.

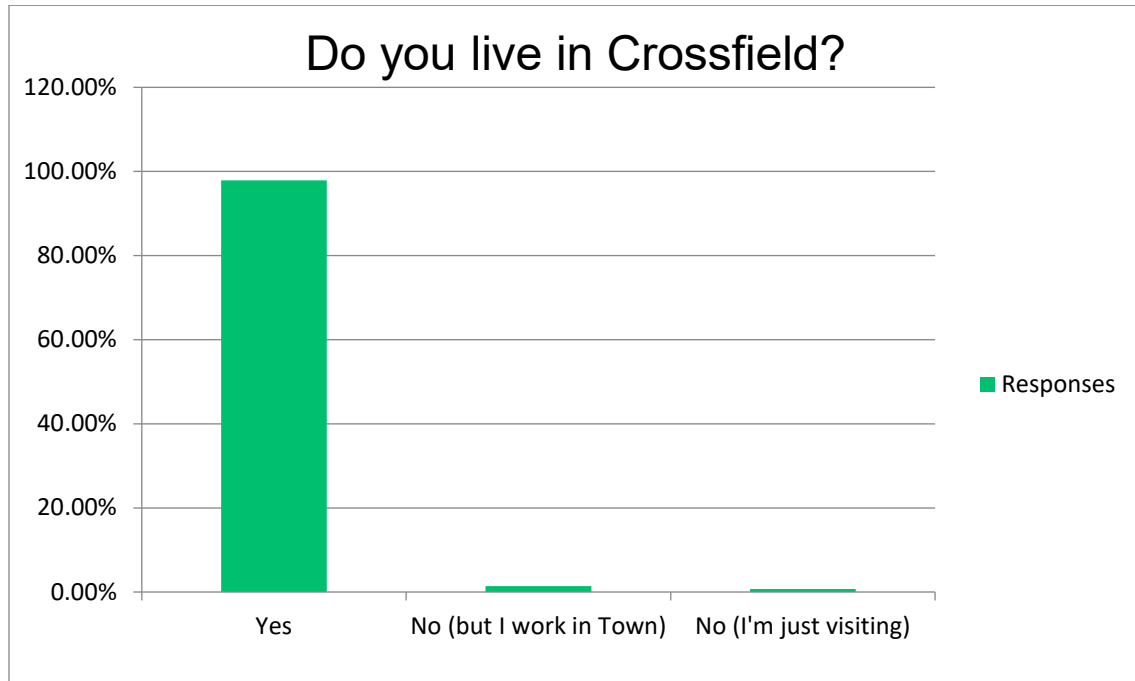
In total, 18 community members attended the Open House (excluding attending members of Council).

ENGAGEMENT RESULTS

SURVEY RESULTS

Q1: DO YOU LIVE IN CROSSFIELD?

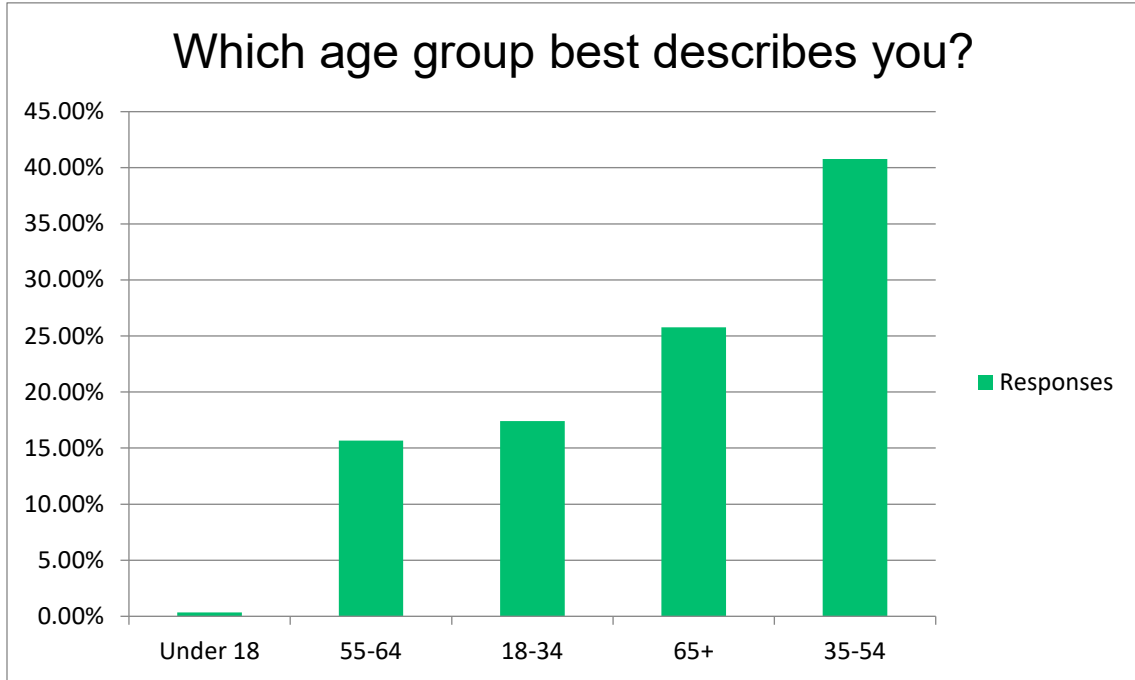
Answered: 287 Skipped:0



ANSWER CHOICES	RESPONSES	
Yes	97.91%	281
No (but I work in Town)	1.39%	4
No (I'm just visiting)	0.70%	2
TOTAL		287

Q2 WHICH AGE GROUP BEST DESCRIBES YOU?

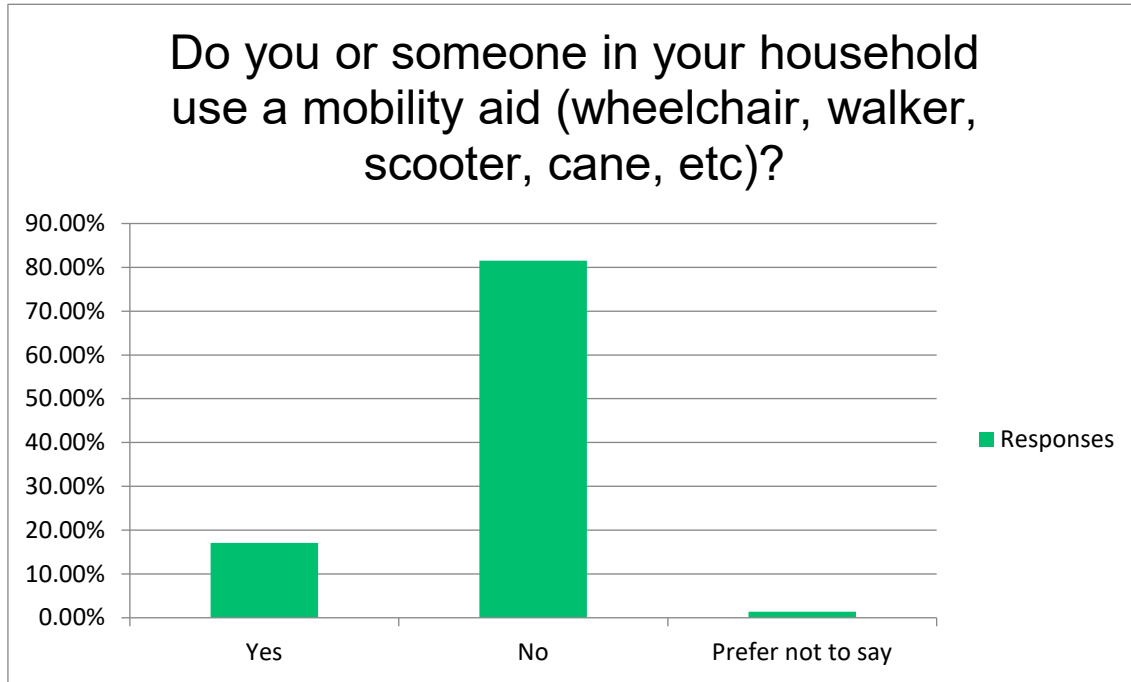
Answered: 287 Skipped:0



ANSWER CHOICES	RESPONSES	
Under 18	0.35%	1
55-64	15.68%	45
18-34	17.42%	50
65+	25.78%	74
35-54	40.77%	117
TOTAL		287

Q3: DO YOU OR SOMEONE IN YOUR HOUSEHOLD USE A MOBILITY AID (WHEELCHAIR, WALKER, SCOOTER, CANE, ETC)?

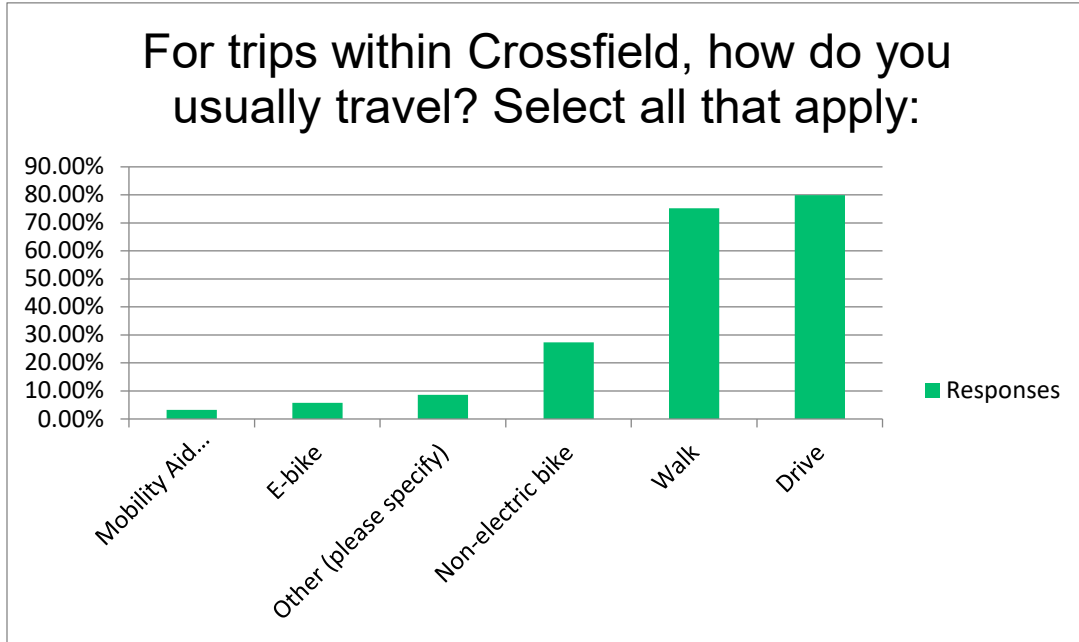
Answered: 287 Skipped:0



ANSWER CHOICES	RESPONSES	
Yes	17.07%	49
No	81.53%	234
Prefer not to say	1.39%	4
TOTAL		287

Q4: FOR TRIPS WITHIN CROSSFIELD, HOW DO YOU USUALLY TRAVEL? SELECT ALL THAT APPLY.

Answered: 278 Skipped:9



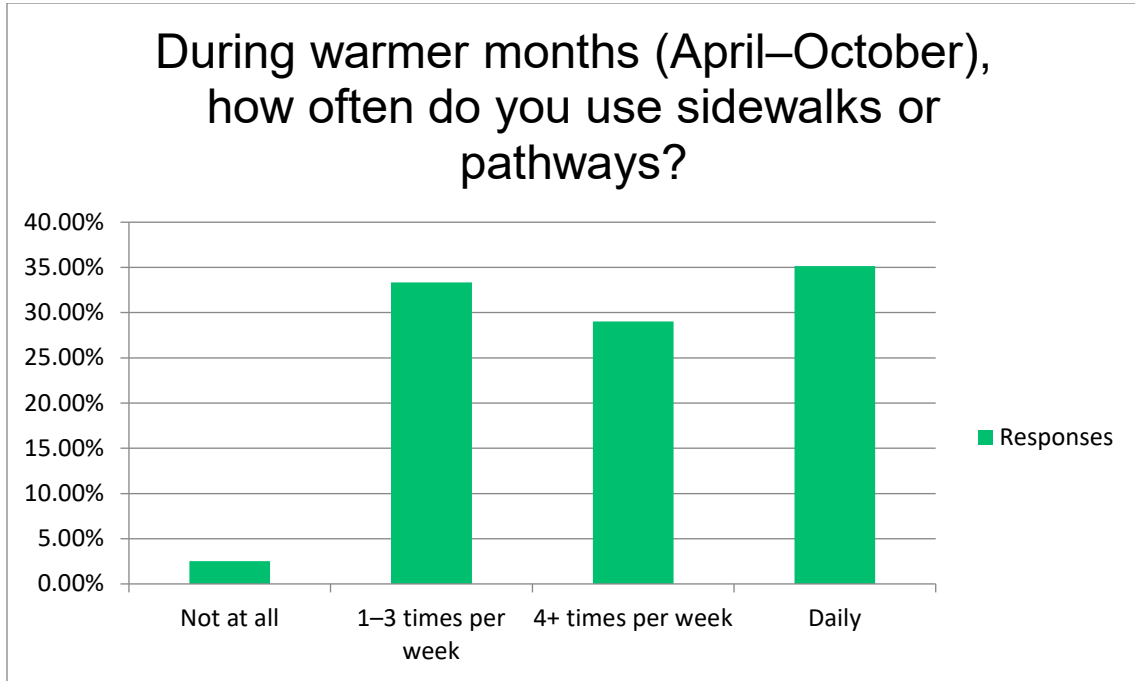
ANSWER CHOICES	RESPONSES	
Mobility Aid (wheelchair, etc.)	3.24%	9
E-bike	5.76%	16
Other (please specify)	8.63%	24
Non-electric bike	27.34%	76
Walk	75.18%	209
TOTAL		278

Other responses included:

- Rollerblade
- Longboard
- Stroller
- Rocky View Lodge bus
- E-Scooter

Q5: DURING WARMER MONTHS (APRIL–OCTOBER), HOW OFTEN DO YOU USE SIDEWALKS OR PATHWAYS?

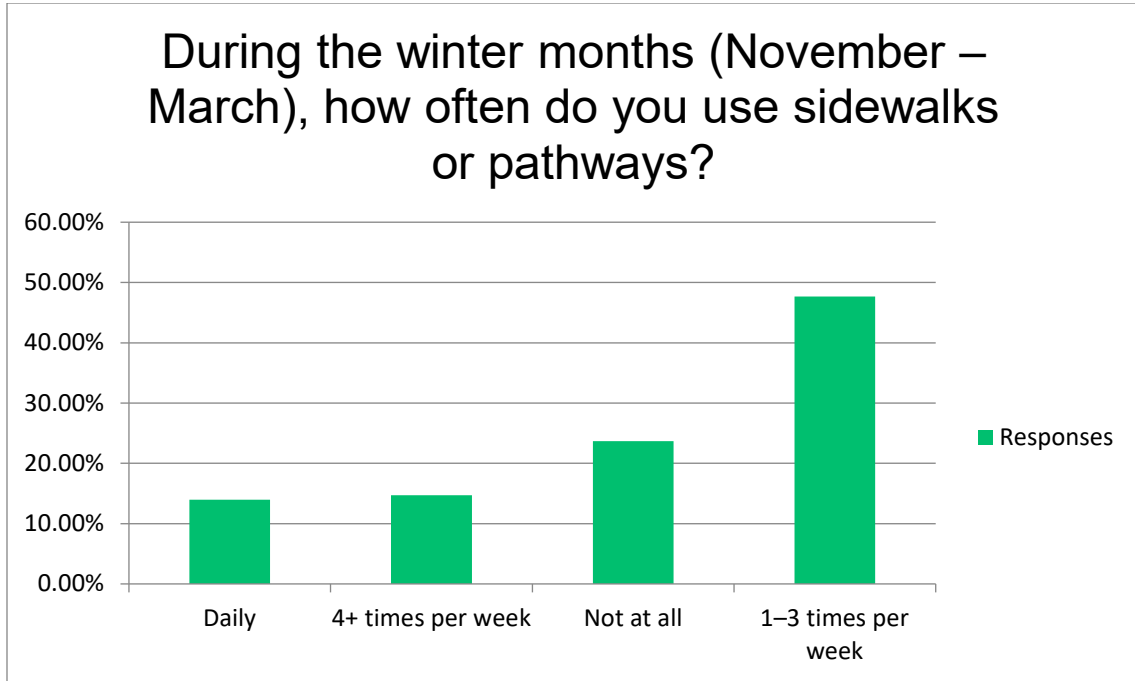
Answered: 279 Skipped:8



ANSWER CHOICES	RESPONSES	
Not at all	2.51%	7
1–3 times per week	33.33%	93
4+ times per week	29.03%	81
Daily	35.13%	98
TOTAL		279

Q6: DURING THE WINTER MONTHS (NOVEMBER – MARCH), HOW OFTEN DO YOU USE SIDEWALKS OR PATHWAYS?

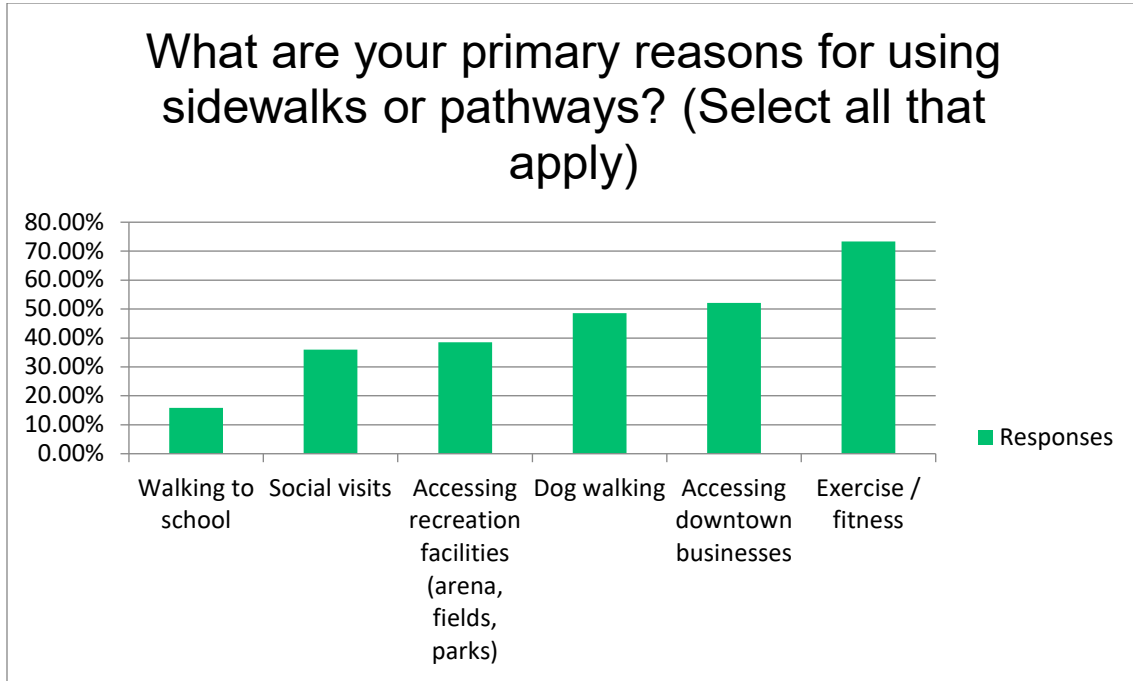
Answered: 279 Skipped:8



ANSWER CHOICES	RESPONSES	
Not at all	13.98%	39
1-3 times per week	14.70%	41
4+ times per week	23.66%	66
Daily	47.67%	133
TOTAL		279

Q7: WHAT ARE YOUR PRIMARY REASONS FOR USING SIDEWALKS OR PATHWAYS? (SELECT ALL THAT APPLY)

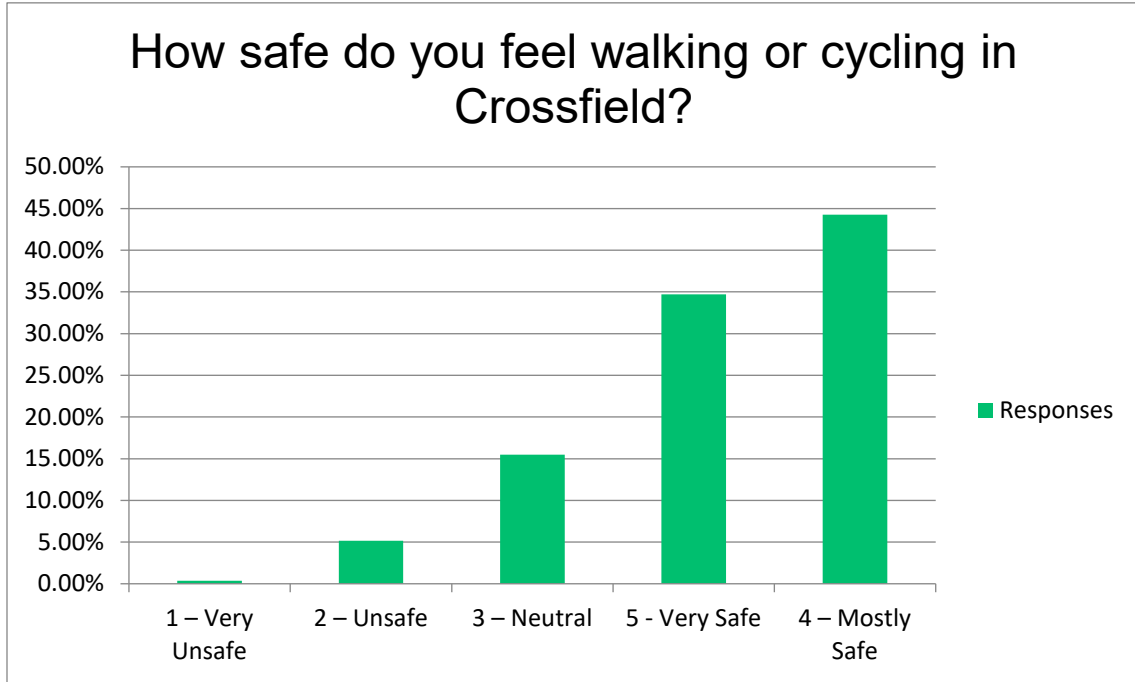
Answered: 278 Skipped:9



ANSWER CHOICES	RESPONSES	
Walking to school	15.83%	44
Social visits	35.97%	100
Accessing recreation facilities (arena, fields, parks)	38.49%	107
Dog walking	48.56%	135
Accessing downtown businesses	52.16%	145
Exercise / fitness	73.38%	204
TOTAL		278

Q8: HOW SAFE DO YOU FEEL WALKING OR CYCLING IN CROSSFIELD?

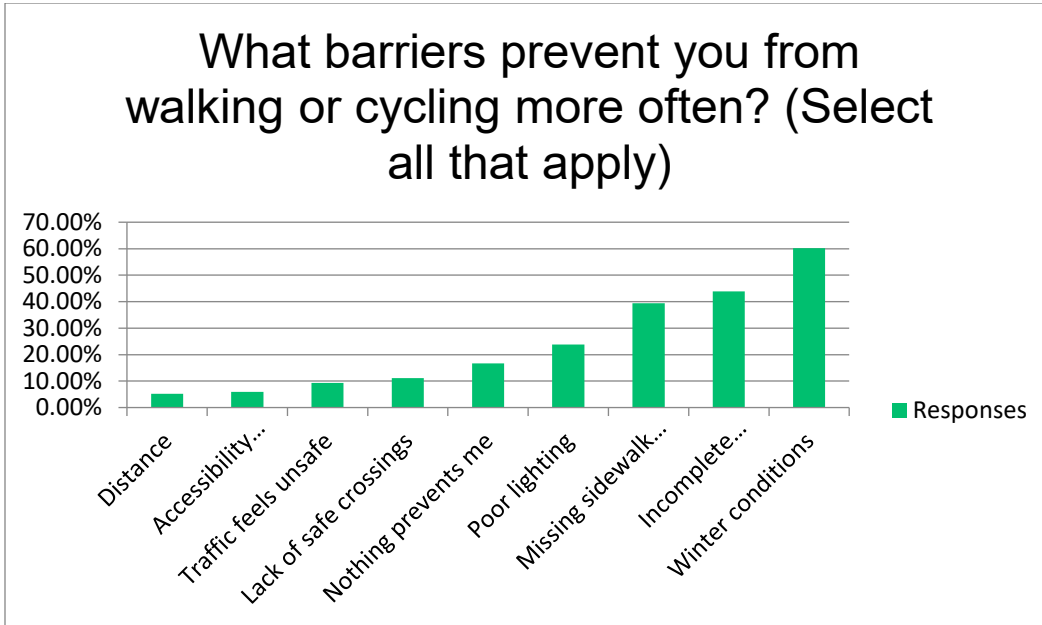
Answered: 271 Skipped:16



ANSWER CHOICES	RESPONSES	
1 – Very Unsafe	0.37%	1
2 – Unsafe	5.17%	14
3 – Neutral	15.50%	42
5 - Very Safe	34.69%	94
4 – Mostly Safe	44.28%	120
TOTAL		271

Q9: WHAT BARRIERS PREVENT YOU FROM WALKING OR CYCLING MORE OFTEN? (SELECT ALL THAT APPLY)

Answered: 269 Skipped:18



ANSWER CHOICES	RESPONSES	
Distance	5.20%	14
Accessibility challenges	5.95%	16
Traffic feels unsafe	9.29%	25
Lack of safe crossings	11.15%	30
Nothing prevents me	16.73%	45
Poor lighting	23.79%	64
Missing sidewalk connections	39.41%	106
Incomplete pathway links	43.87%	118
Winter conditions	60.22%	162
TOTAL		269

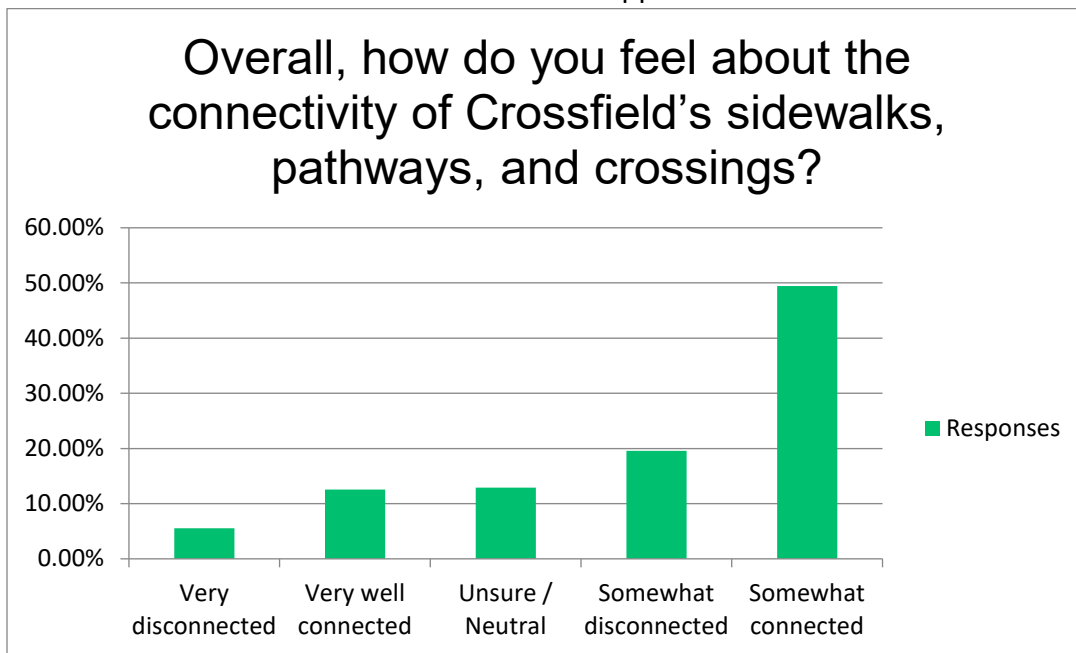
Other responses include:

- Winter conditions (snow, ice, and poor clearing) make walking difficult and unsafe.
- Sidewalks and pathways are often narrow, uneven, poorly maintained, or lack connectivity and destinations.
- Traffic and crossings are a concern due to speeding vehicles, drivers not stopping, and unsafe crossing conditions.
- Lighting is insufficient, making pathways and crossings difficult to see and use safely, especially at night and in winter.
- Loose and off-leash dogs are a frequent safety concern, with limited enforcement of bylaws.
- Conflicts between users (pedestrians, cyclists, e-bikes, and scooters) create safety risks on sidewalks and pathways.

- Accessibility barriers make it difficult for seniors, strollers, and mobility aid users to navigate the network.
- Amenities are limited, including a lack of washrooms, shade, rest areas, and appealing destinations.
- Lack of enforcement and poor behaviour (e.g., un-shovelled sidewalks, blocked walkways) impact safety and usability.
- Pathway connectivity is incomplete, with gaps in the network and limited cycling infrastructure.
- Personal factors, such as weather, fear of falling, and motivation.

Q10: OVERALL, HOW DO YOU FEEL ABOUT THE CONNECTIVITY OF CROSSFIELD’S SIDEWALKS, PATHWAYS, AND CROSSINGS?

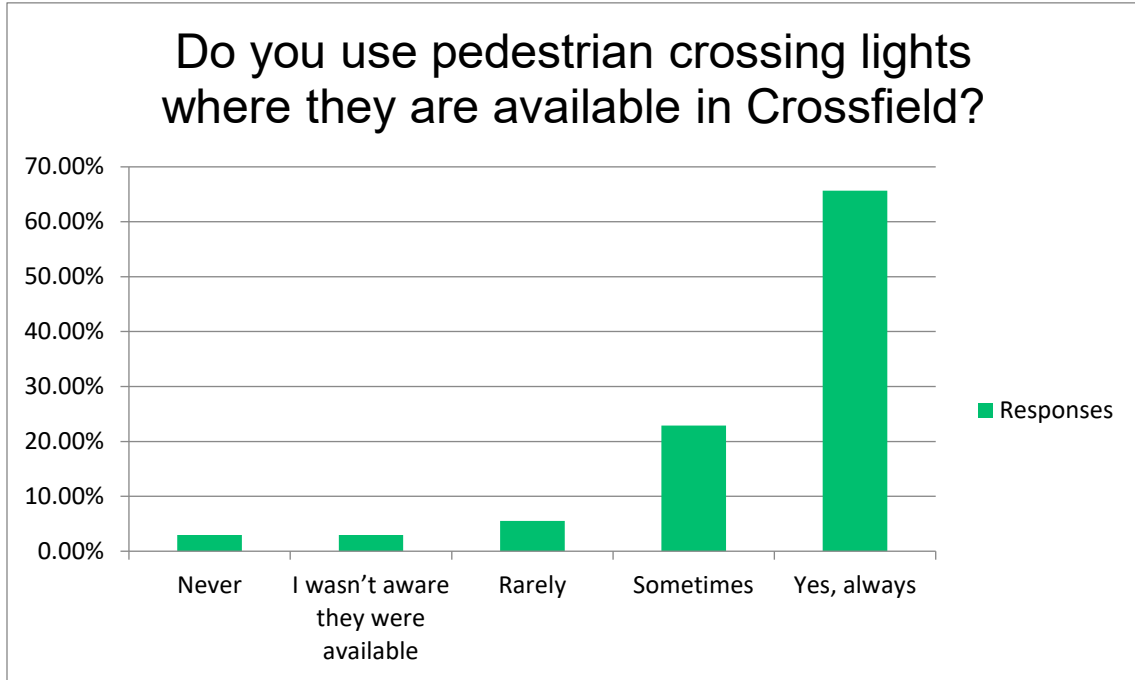
Answered: 271 Skipped:16



ANSWER CHOICES	RESPONSES	
Very disconnected	5.54%	15
Very well connected	12.55%	34
Unsure / Neutral	12.92%	35
Somewhat disconnected	19.56%	53
Somewhat connected	49.45%	134
TOTAL		271

Q11: DO YOU USE PEDESTRIAN CROSSING LIGHTS WHERE THEY ARE AVAILABLE IN CROSSFIELD?

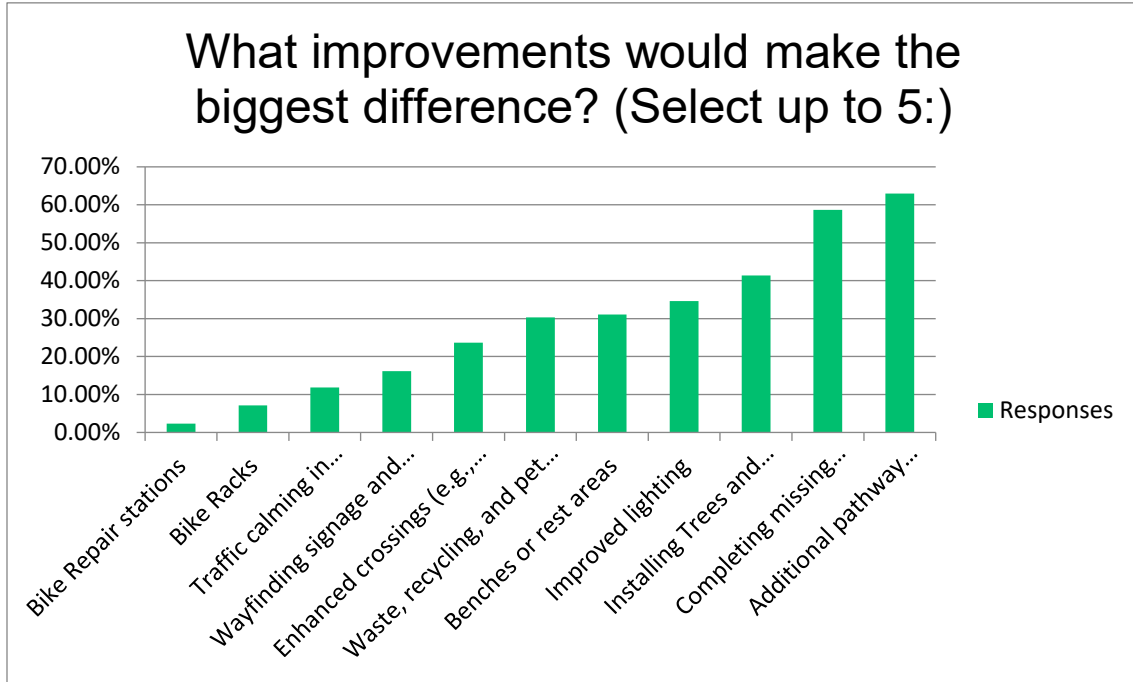
Answered: 271 Skipped:16



ANSWER CHOICES	RESPONSES	
Never	2.95%	8
I wasn't aware they were available	2.95%	8
Rarely	5.54%	15
Sometimes	22.88%	62
Yes, always	65.68%	178
TOTAL		271

Q12: WHAT IMPROVEMENTS WOULD MAKE THE BIGGEST DIFFERENCE? (SELECT UP TO 5:)

Answered: 254 Skipped:33



ANSWER CHOICES	RESPONSES	
Bike Repair stations	2.36%	6
Bike Racks	7.09%	18
Traffic calming in residential areas (e.g., curb bulbs, signage, etc.)	11.81%	30
Wayfinding signage and maps	16.14%	41
Enhanced crossings (e.g., accessibility ramps, zebra markings, and flashing lights)	23.62%	60
Waste, recycling, and pet waste receptacles	30.31%	77
Benches or rest areas	31.10%	79
Improved lighting	34.65%	88
Installing Trees and landscaping along pathways	41.34%	105
Completing missing sidewalk connections	58.66%	149
Additional pathway connections	62.99%	160
TOTAL		254

Q13: ARE THERE ANY SPECIFIC LOCATIONS IN CROSSFIELD WHERE YOU THINK IMPROVEMENTS ARE NEEDED TO SUPPORT SAFE AND ACCESSIBLE ACTIVE TRANSPORTATION? PLEASE PROVIDE YOUR TOP 3 LOCATIONS.

Answered: 139 Skipped:148

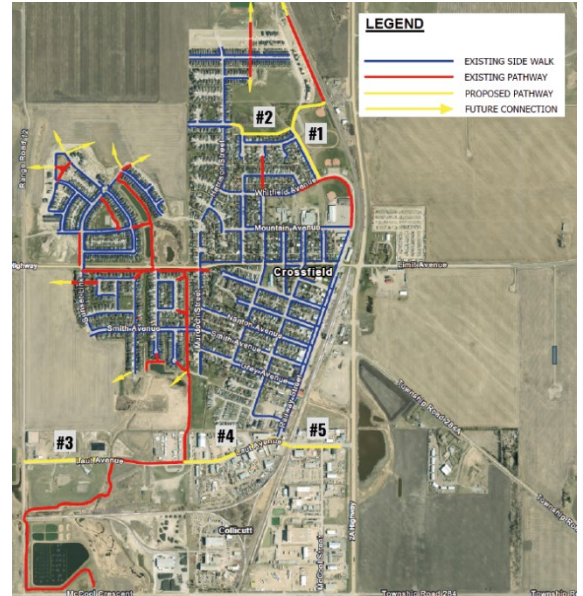
Responses included:

- **Limit Avenue Corridor**
Identified as a major concern for crossings, drainage, narrow sidewalks, and overall pedestrian safety—especially at key intersections (e.g., Harrison, Railway, Sunset Link).
- **Railway Street & Limit Avenue Intersection**
Frequently cited as one of the most dangerous crossings in town due to poor visibility, lack of signals, and high traffic volumes.
- **School Areas & Crosswalks**
Concerns around unsafe crossings, lack of flashing lights, slippery painted surfaces, and missing sidewalks near schools.
- **Iron Landing & Northern Developments**
Significant gaps in pathways, sidewalks, and connectivity, with ongoing concerns about unfinished infrastructure and safety.
- **Vista Crossing & Connecting Routes**
Issues with speeding traffic, limited access points, lack of safe crossings, and incomplete pathway connections.
- **Laut Avenue Corridor**
Lack of sidewalks and safe connections, particularly between Railway Street, McCool Street, and the rodeo grounds.
- **McCaskill Drive & Veterans Park Area**
Missing connections between new and existing neighbourhoods, limited accessibility into parks, and lack of continuous pathways.
- **Murdoch Park & Rodeo Grounds Pathways**
Poor connectivity, lack of lighting, and incomplete pathways limiting safe access and usability.
- **Downtown Core (Main Street, Railway, Post Office Area)**
Uneven sidewalks, winter maintenance challenges, and difficult pedestrian navigation.
- **Storm Ponds, Lagoon & Dog Park Areas**
Desire for looped pathways, better maintenance, and stronger connections back into the main network.
- **Town-Wide Connectivity Gaps**
Residents highlighted the need for continuous pathways linking neighbourhoods, parks, schools, and commercial areas into a cohesive network.

Q14: THE TOWN HAS DEVELOPED A PROPOSED ACTIVE TRANSPORTATION NETWORK MAP, SHOWING EXISTING AND POTENTIAL FUTURE CONNECTIONS. FROM THE LOCATIONS SHOWN ON THE MAP, PLEASE RANK YOUR TOP 3 FUTURE CONNECTION PRIORITIES.

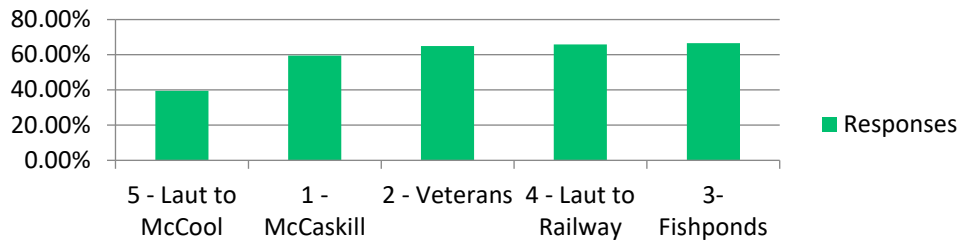
PROPOSED PATHWAYS

- #1** McCaskill Park
- #2** Veterans Park
- #3** Laut Ave. to Fishponds
- #4** Laut Ave. to Railway St.
- #5** Laut Avenue- Railway St. to McCool St.



Answered: 225 Skipped:62

The Town has developed a proposed Active Transportation Network map, showing existing and potential future connections. From the locations shown on the map, please rank your top 3 future connection priorities: Proposed Active Transportation Priorities



ANSWER CHOICES	RESPONSES	
5 - Laut to McCool	39.56%	89
1 - McCaskill	59.56%	134
2 - Veterans	64.89%	146
4 - Laut to Railway	65.78%	148
3- Fishponds	66.67%	150
TOTAL		225

Q15: ARE THERE ANY ADDITIONAL LOCATIONS (THAT ARE NOT LISTED ON THE MAP) THAT SHOULD BE CONSIDERED? PLEASE LIST LOCATION OR AREA.

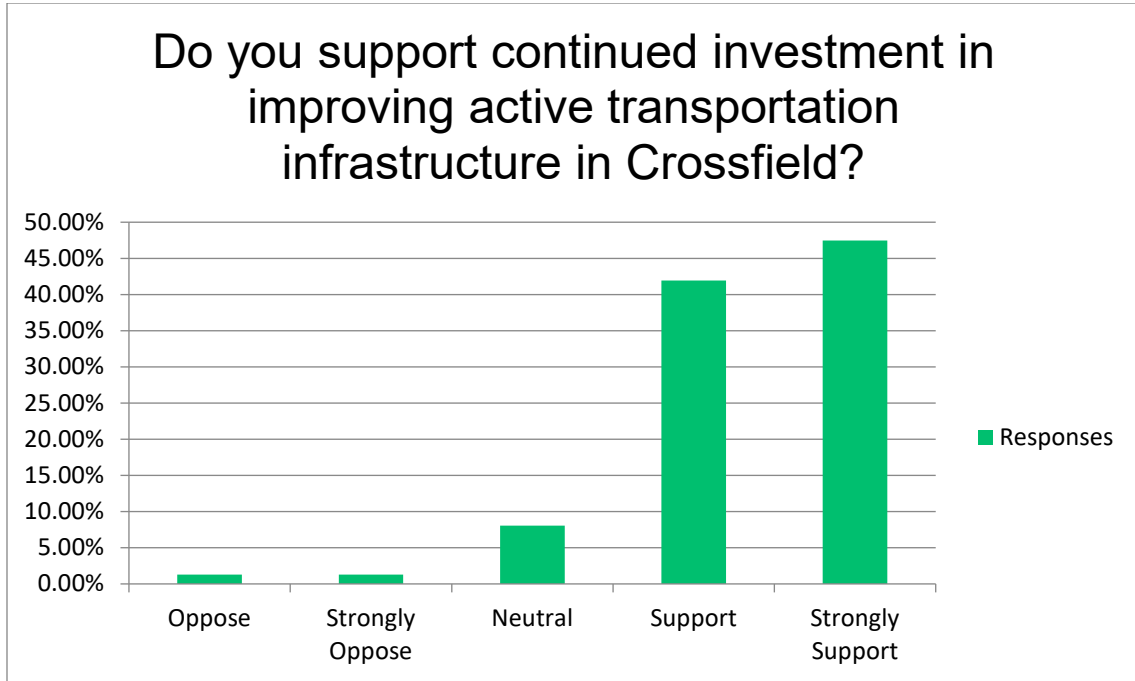
Answered: 72 Skipped: 215

Responses included:

- **Railway Crossing & Railway Street Corridor**
The railway crossing and surrounding sidewalks are difficult to navigate and require upgrades for safety and accessibility.
- **McCool Street & Industrial Area**
There is a strong need for sidewalks and safer walking routes, particularly connecting businesses and surrounding areas.
- **Knight Avenue & Vista Connections**
Incomplete connections and informal routes create unsafe conditions, especially for school-aged children.
- **Vista, Iron Landing & North Crossfield**
Continued concerns about missing pathways, incomplete infrastructure, and lack of connectivity in newer neighbourhoods.
- **Veterans Park & Surrounding Connections**
Improved access, internal pathways, and stronger connections to adjacent neighbourhoods are needed.
- **Laut Avenue & Rodeo Grounds Area**
Additional sidewalks and pathways are needed to support safe access and reduce walking on roadways.
- **Golf Course, Lagoons & Dog Park Areas**
Residents would like looped pathways and better connections to avoid dead ends and improve usability.
- **Harrison Street & West/North Connections**
Safer and more direct connections are needed between Harrison, Vista, and surrounding pathways.
- **School Areas & Nearby Streets**
Missing sidewalks and unsafe routes near schools continue to be a concern for students and families.
- **Storm Ponds, Ballpark & Park Areas**
Opportunities exist to complete pathways, improve maintenance, and enhance usability around these amenities.
- **Town-Wide Loop & Trail Opportunities**
Interest in a continuous looped pathway system, including potential use of rail corridors and perimeter routes.

Q16: DO YOU SUPPORT CONTINUED INVESTMENT IN IMPROVING ACTIVE TRANSPORTATION INFRASTRUCTURE IN CROSSFIELD?

Answered: 236 Skipped: 51



ANSWER CHOICES	RESPONSES	
Oppose	1.27%	3
Strongly Oppose	1.27%	3
Neutral	8.05%	19
Support	41.95%	99
Strongly Support	47.46%	112
TOTAL		236

Q17: PLEASE SHARE ANY ADDITIONAL COMMENTS OR SUGGESTIONS:

Answered: 70 Skipped: 217

Responses included:

- **Winter maintenance is the top concern**, with strong emphasis on improved snow clearing, sanding, and enforcement for un-shovelled sidewalks.
- **Safety concerns persist**, particularly related to speeding vehicles, unsafe crossings, loose dogs, and interactions with e-bikes and scooters.
- **Sidewalk and pathway design needs improvement**, including wider sidewalks, smoother surfaces, better drainage, and safer downtown layouts.
- **Connectivity remains a priority**, with residents wanting continuous, looped pathways rather than disconnected routes that lead to dead ends.
- **Developers should be held accountable** for building pathways, sidewalks, and public amenities as part of new developments.
- **Existing infrastructure should be upgraded and maintained**, rather than focusing solely on building new pathways.
- **Lighting and visibility should be improved** in key areas, while balancing concerns about over-lighting in residential spaces.
- **Amenities and enhancements are desired**, including benches, washrooms, waste bins, rest areas, and wayfinding or distance markers.
- **Natural and aesthetic features are important**, with interest in more trees, scenic routes, and pathways integrated with green spaces.
- **Stronger bylaw enforcement is needed**, particularly for sidewalk clearing, parking obstructions, and dog control.
- **Overall sentiment is mixed but generally supportive**, with appreciation for existing pathways and engagement, alongside clear expectations for improvements.

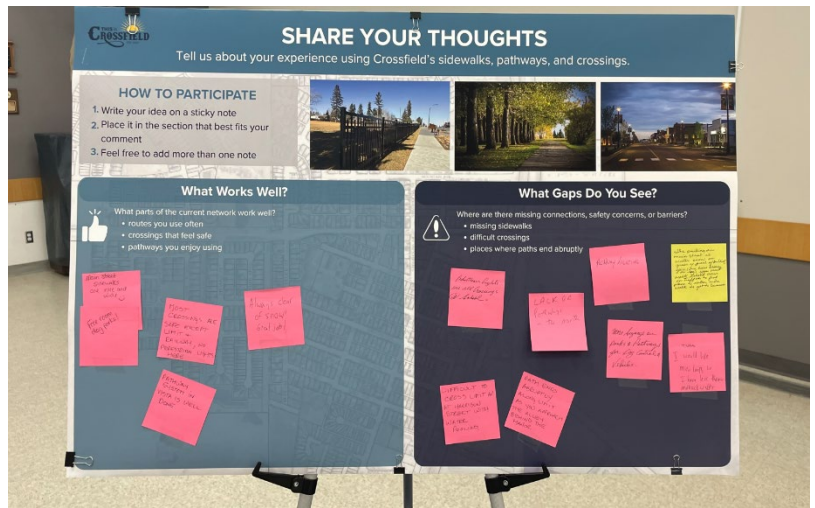
OPEN HOUSE FEEDBACK SUMMARY

Feedback collected at the March 24, 2026 Open House provided qualitative insights to complement the survey results. Input was gathered through three interactive boards focused on resident experience, improvement priorities, and future pathway connections.

BOARD #1: RESIDENT EXPERIENCE

Key themes:

- Positive feedback on Main Street sidewalks, Vista pathways, and snow clearing efforts
- Concerns related to:
 - Winter accessibility and snow accumulation
 - Limited connectivity in the north end
 - Missing pedestrian crossing lights (schools, Limit Ave & Railway)
 - Drainage issues and pathways ending abruptly
 - Need for improved signage and lighting



Board #2: SUGGESTED IMPROVEMENTS

Top priorities identified:

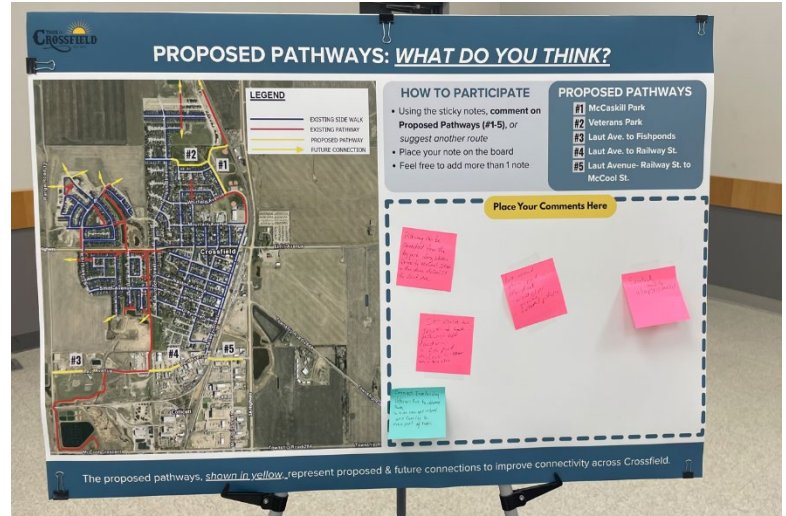
- Improved pathway connectivity within Town and regionally
- Better winter maintenance and accessibility
- Enhanced safety (crossings, traffic calming, lighting)
- Additional amenities (benches, trees, rest areas)
- Improved signage, wayfinding, and education



Board #3: Proposed Connections

Key suggestions included:

- Connections between key corridors (dog park → Laut Ave, etc.)
- Off-road pathways near ponds and McCaskill area
- Loop-style pathways (storm ponds, town perimeter)
- Improved connectivity in developing areas (Iron Landing, Veterans Park)



Open House feedback closely aligned with survey findings, particularly in identifying connectivity gaps, winter condition challenges, and safety improvements as key priorities.

A detailed summary of all Open House feedback is included in Appendix A.

OVERALL INSIGHT

Overall, feedback indicates that while Crossfield has a strong foundation of active transportation infrastructure, residents are seeking a more connected, safe, and complete network that is usable year-round.

KEY FINDINGS

1. Strong support for investment

Nearly 90% of respondents support continued investment in active transportation infrastructure.

2. Connectivity is the top priority

Missing sidewalk and pathway connections were the most frequently identified gap across both survey and Open House feedback.

3. Winter conditions are the biggest barrier

Over 60% of respondents identified winter conditions as a key challenge, reinforced by consistent Open House feedback.

4. Safety concerns are location-specific

Key corridors and intersections (e.g., Limit Avenue, Railway Street, school areas) were repeatedly identified as needing improvements.

The top five (5) locations identified with safety Concerns are:

a. Limit Avenue corridor

- Unsafe crossings
- Narrow sidewalks
- Drainage issues impacting pedestrian safety

b. Railway Street & Limit Avenue intersection

- Repeatedly identified as one of the most dangerous crossings
- Poor visibility
- Lack of signals
- High traffic volumes

c. School areas and surrounding crosswalks

- Unsafe crossings for students
- Lack of flashing lights
- Slippery painted surfaces

d. Vista Crossing and connecting routes

- Speeding traffic
- Limited safe crossing opportunities

e. **Downtown core (Main Street, Railway, Post Office area)**

- Uneven sidewalks
- Winter conditions forcing pedestrians into traffic

5. Network is usable, but incomplete

Most residents feel somewhat connected, but gaps prevent the system from functioning as a cohesive network.

6. Amenities and comfort matter

Residents want benches, lighting, trees, and wayfinding to improve usability—not just more pathways.

NEXT STEPS

Feedback collected through the survey and Open House will be used to inform the development of the Town's Active Transportation Plan.

A draft Active Transportation Plan will be developed and presented to Council for review and direction. Once finalized, the Plan will be shared with the community and developers.

APPENDIX A: OPEN HOUSE – SUMMARY OF FEEDBACK

Date: Tuesday, March 24, 2026

Time: 3:00 p.m. – 7:00 p.m.

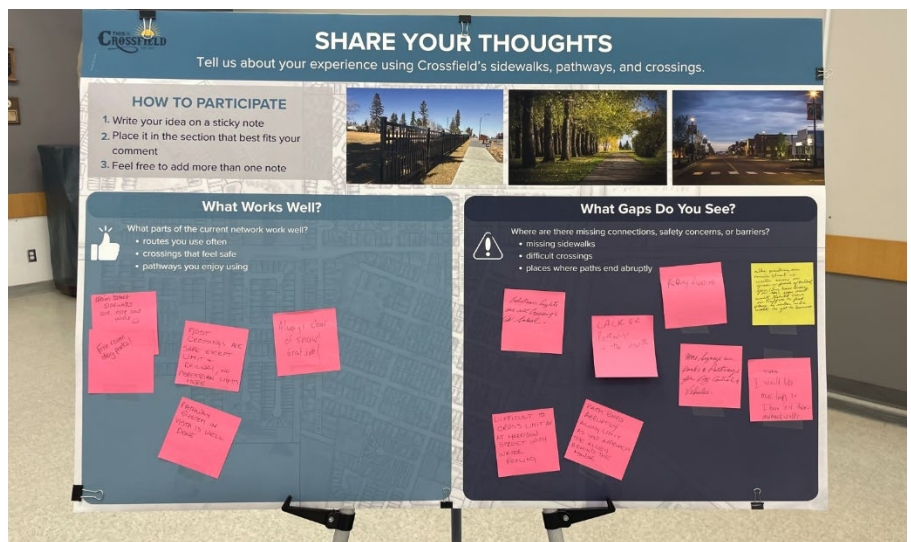
Residents were invited to provide input using three interactive boards. Feedback was collected through written comments on sticky notes and grouped by theme below.

Board #1: Resident Experience

Prompt: *Tell us about your experience using Crossfield’s sidewalks, pathways, and crossings.*

What’s Working Well

- Dog parks and opportunities for free roaming
- Wide sidewalks along Main Street
- Well-designed pathway system in Vista subdivision
- Most crossings are generally considered safe
- Positive feedback on snow clearing efforts



Gaps & Challenges Identified

- Lack of pedestrian crossing lights, particularly near schools and at Limit Ave & Railway Street
- Limited pathway connectivity in the north end of Town
- Insufficient pathway lighting
- Winter conditions impacting accessibility:
 - Snow accumulation near Main Street businesses forces pedestrians into traffic
 - Snow clearing at crossings and ramps requires improvement
- Drainage issues (e.g., water pooling at Limit Ave & Harrison Street)
- Pathways ending abruptly (e.g., along Limit Ave near Rocky View Lodge)
- Need for clearer signage:
 - Dog control
 - Vehicle awareness in pathway areas
- Desire for shorter walking loops (less “out-and-back” routes)

Board #2: Suggested Improvements

Prompt: *What improvements should the Town consider for pathways, sidewalks, and crossings?*

Top Themes Identified

- **Connectivity**

- Additional pathway connections throughout Town
- Regional trail connections (e.g., Crossfield to Airdrie, Crossfield to Madden)

- **Accessibility & Maintenance**

- Improved snow clearing on sidewalks, pathways, and crossings
- Better clearing at crosswalk ramps for strollers and wheelchairs

- **Safety Enhancements**

- More enhanced crossings
- Traffic calming measures (e.g., Vista Drive)
- Improved pathway lighting

- **Amenities & Comfort**

- More benches and rest areas
- Additional trees and landscaping

- **Lighting**

- LED lighting on motion sensors in parks and pathways

- **Education & Wayfinding**

- Interpretive signage (e.g., natural features, local species, pond ecosystems)



Board #3: Proposed Pathway Connections

Prompt: Provide feedback on five proposed pathway connections identified on the Town map.

Key Suggestions

- Connect dog park → Western Drive → McCool Street → Laut Avenue
- Develop off-road pathways near:
 - Fish ponds
 - McCaskill area (near train tracks)
- Create a pathway loop around the storm pond in Murdoch Park (natural surface options suggested: woodchips, gravel)
- Develop a perimeter pathway loop around the Town
- Improve connectivity in Iron Landing:
 - Connect Veterans Avenue to Veterans Park
 - Enhance safe routes for children traveling to school and families accessing central Town amenities

